

Taxiway & Runway Edge Light Bases



Anytime. Anywhere.

Pole Base taxiway and runway edge light bases allow you to take back control of your job schedule and your job site. Unlike cast-in-place options, Pole Base allows you to make your jobs more predictable and more profitable because the bases are created in a controlled environment and delivered to the job site ready to go with your exact specifications.

You can install the bases on your own schedule—no need to wait for concrete trucks to arrive or for the weather to cooperate. Simply auger your hole, place the base, backfill, and you're ready to install the lights into the junction cans already cast into the base. Less headaches during installation means better efficiency for your whole project!



No more fuss. No more stress.

We've eliminated on-site assembly, meaning you can forget about all the tedious concrete prep work and curing time. We've taken care of it, so you can get on with the rest of your project.

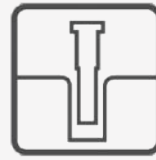
There's no need for concrete trucks, so you don't have to worry about short loads, bad weather, or expensive premiums for delivery that fits your (or the airport's) schedule. You're back in charge.

Optimize productivity across your whole project through more efficient installation of runway and taxiway bases. With low labor requirements and the ability to stage your inventory on site for quick access, a multi-day project can streamline into a single day's worth of work.

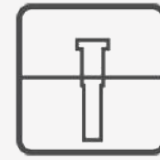
How it Works:



1. Auger



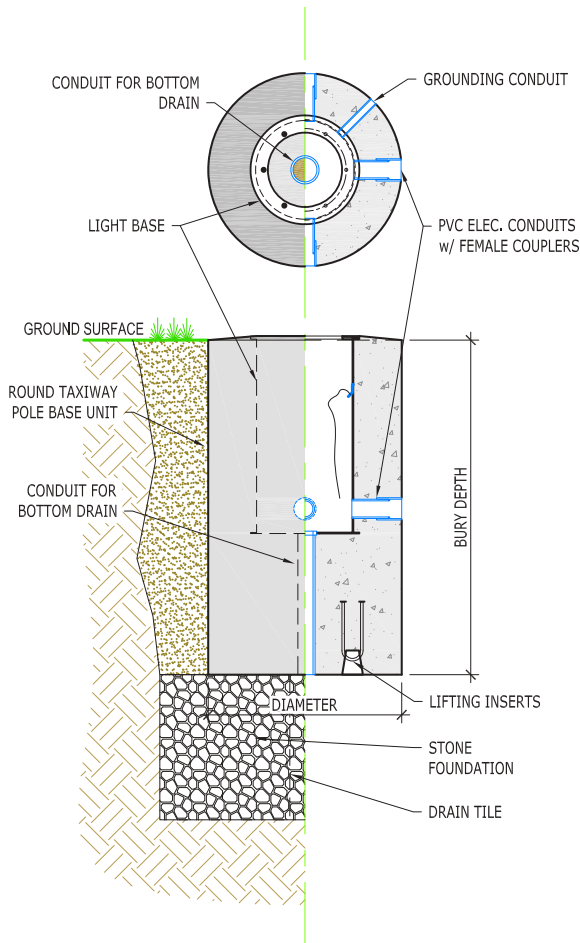
2. Place



3. Backfill



4. Profit



**Taxiway & Runway
Edge Light Base**

Power of Precast

Made from architectural grade concrete and specified at 5000 psi to ensure your work won't crack under pressure.

Flexibility & Functionality

Work in any environmental scenario to stay on your own schedule (not Mother Nature's), while getting the end result you want.

Concrete with Convenience

Eliminate the concrete trucks, streamlining your work. Stop squeezing trucks into unfavorable sites and start staging your ready-to-go taxiway bases where you want.

Fast & Easy Installation

Inventory precast units onsite for quick access and installation. Just auger, place, backfill, and you're ready to install the lights!

Reach Out For A Quote Today!

pole base



Tom McConnell, Sales Director
American Precast Industries
51 Glassworks Dr. Clarion, Pa 16214
tmcconnell@americanprecastindustries.com
814-316-2754